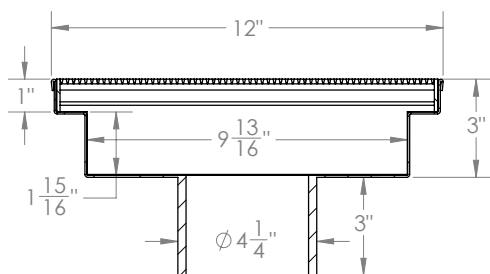




Elevator Drain



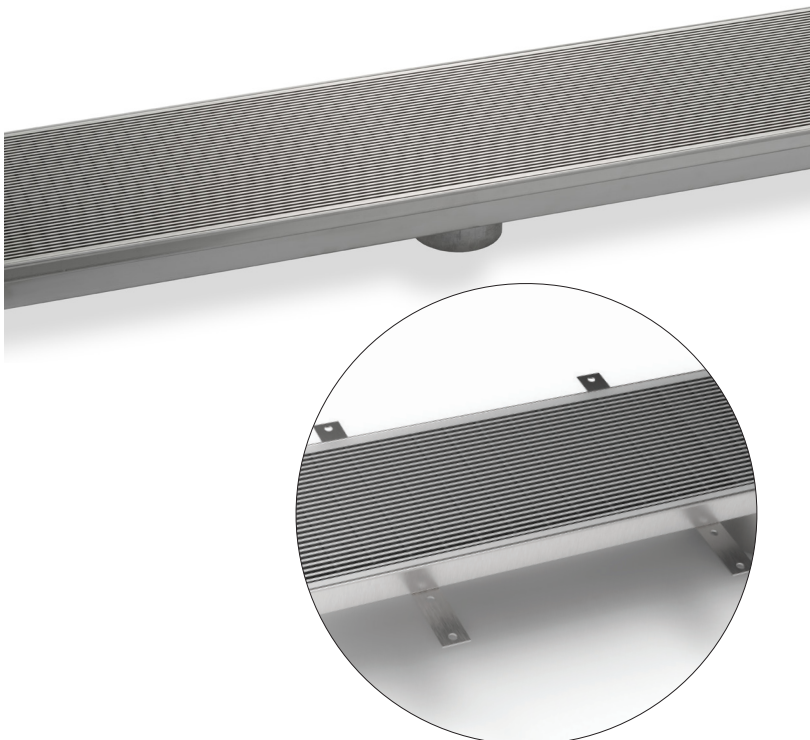
- 316L stainless steel 3mm Wedge Wire grate
- 16 gauge, 304L stainless steel channel
- Pre-pitched channel with 4" centered outlet
- Channel height: 3"
- Channel width: 12"



Product Use

Prevents water from entering elevator shafts in the event of a fire and the sprinkler system is triggered. It is typically positioned in front of the elevator door or elevator bank.

Complies with SFFC Code, Section 511.1 for a 100 GPM flow rate. Meets ADA and heel-proof requirements. IAPMO tested and certified to a 100 GPM flow rate.



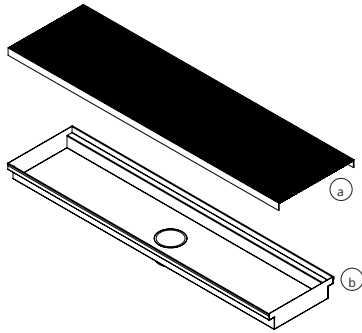
Drain Options

Available in 36", 48" and 60" kits. Available in Satin Stainless and Polished Stainless finishes.

Elevator drain grates are removable for accessible cleaning and maintenance

Tamper resistant fasteners and mounting anchors options available.

ELEVATOR DRAIN SERIES



Exploded Diagram Key

(a) **A 300** - Wedge Wire Grate

(b) **XV 300** - Stainless Steel Channel

Standard Finishes

SS Satin Stainless

PS Polished Stainless

Technical Details

Grate Material: 316L Stainless Steel

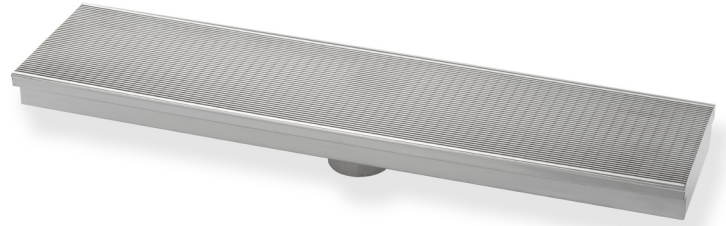
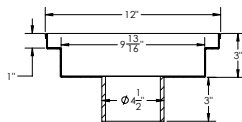
Channel Material: 16 Gauge 304L Stainless Steel

Finished Width: 12"

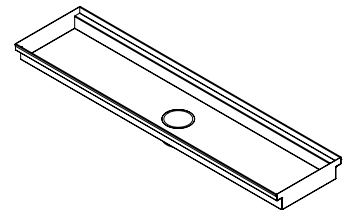
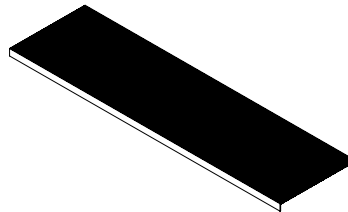
Height: 3"

Flow Rate: 100 GPM

Section Detail

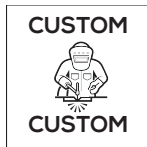


Size	Components in Kit	Kit SKU
36"	1 - A 30036 - Stainless Steel Grate 1 - XV 30036 - Stainless Steel Channel	ELVAS 30036 SS ELVAS 30036 PS
42"	1 - A 30042 - Stainless Steel Grate 1 - XV 30042 - Stainless Steel Channel	ELVAS 30042 SS ELVAS 30042 PS
48"	1 - A 30048 - Stainless Steel Grate 1 - XV 30048 - Stainless Steel Channel	ELVAS 30048 SS ELVAS 30048 PS



Size	Grate SKU
36"	A 30036 SS A 30036 PS
42"	A 30042 SS A 30042 PS
48"	A 30048 SS A 30048 PS

Size	Channel SKU
36"	XV 30036 SS XV 30036 PS
42"	XV 30042 SS XV 30042 PS
48"	XV 30048 SS XV 30048 PS

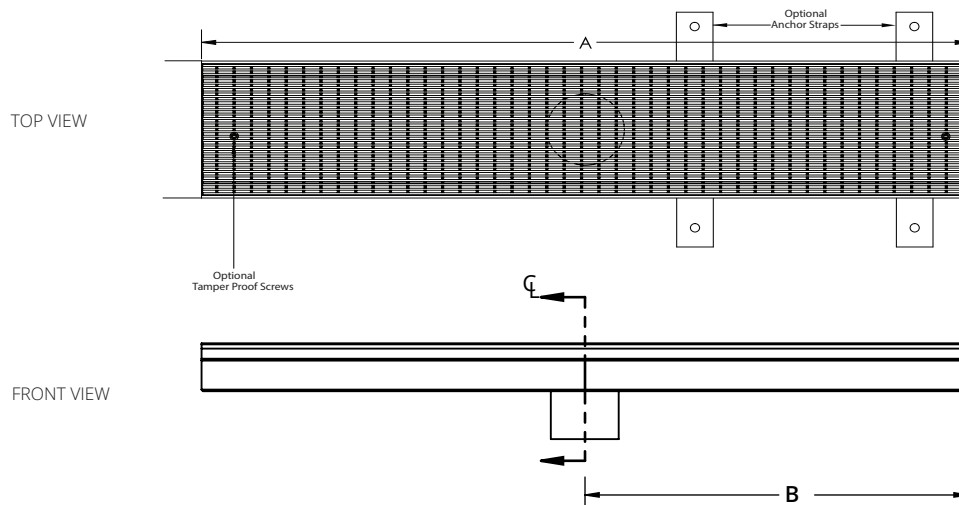


ELEVATOR DRAIN

Custom Form

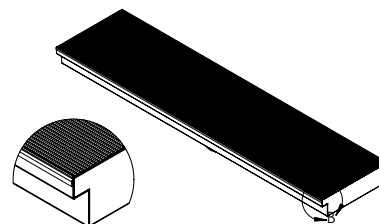
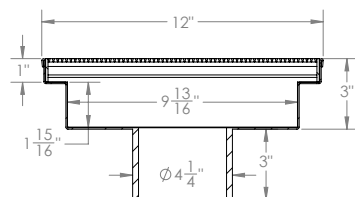
Infinity Drain elevator drains are constructed of 16 gauge 304L ASTM A240 stainless steel with a 4" No-hub center outlet. The elevator drain is designed to mitigate waterflow into a hoist-way by way of a drain channel into an outlet section. Standard grate is the wedge wire (SA) grate constructed of 316L stainless steel which is ADA compliant, can be specified to include tamper resistant locking screws to secure the grate. Installer must verify all rough-in dimensions prior to installation and consult local and national codes. Conformity and compliance to local and national codes are the responsibility of

Customize the length of the drain to match your onsite conditions



A: Overall Length	B: Outlet Location 1	C: Outlet Length	

12" Wide x 3" Depth Channel



DETAIL B
SCALE 1 : 4

Optional Channel Features:

- ☐ Tamper Resistant Protection ☐ Anchor Straps

- Tamper Resistant Screws are designed to prevent any unauthorized removal or altering of the drain after installation
- Anchor Straps provide a mechanical connection for the drain when installing within a concrete slab.

Grate Style

☐ WEDGE WIRE



☐ NO GRATE: CHANNEL ONLY

Grate Finish - Choose (1)

- ☐ Satin Stainless (SS)
☐ Polished Stainless (PS)

Terms and Conditions:

By signing this form, you are agreeing to the terms and conditions herein. All details and finishes stated are correct. All dimensions are correct and are to be held within a tolerance of +/- 1/16". All other details and dimensions that are specified as "standard" are subject to manufacturer's tolerance and change without notice. We can assume no

Infinity Drain
145 Dixon Avenue
Amityville, NY 11701
Phone: 516.767.6786
Fax: 516.740.3066



APPROVAL	NAME 	JOB NAME/REFERENCE
	SIGNATURE 	DATE

For pricing email: quotes@infinitydrain.com

www.infinitydrain.com

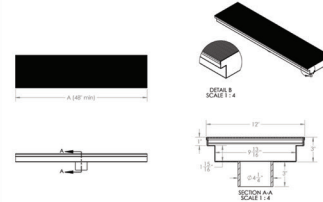
Case Study:



ANAGRAM

COLUMBUS CIRCLE

ID Infinity Drain®



1 West 60th Street

1841 Broadway

Developer:
Global Holdings Management Group

Architect (of Design):
INC Architecture & Design

Architect of Record:
SLCE Architects



145 Dixon Avenue, Amityville, New York 11701

Phone 516.767.6786 ~ Fax 516.740.3066

www.infinitydrain.com



Infinity Drain is made in the USA