

TNAS-2 Specifications Infinity Drain

TNAS-2: 2" L x 2" Diameter

Stainless Steel Threaded Outlet

- NPS straight thread
- For stainless steel channels requiring a threaded outlet connection

Compatible with the following models:

Site Sizable Series

- S-AS 65
- S-TIFAS 65 / S-LTIFAS 65

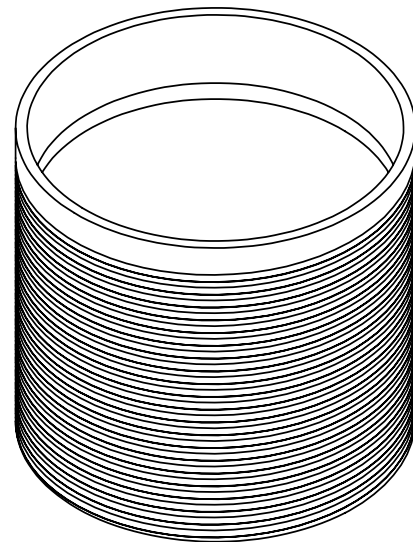
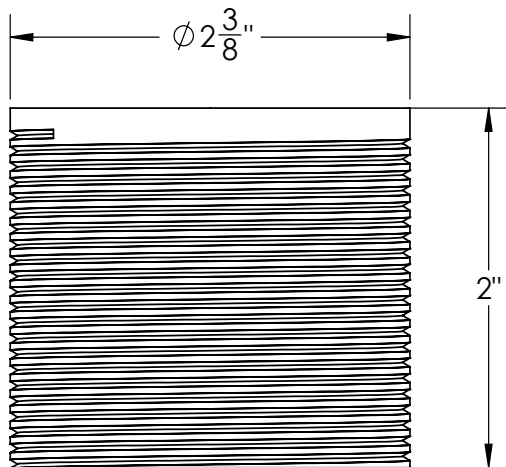
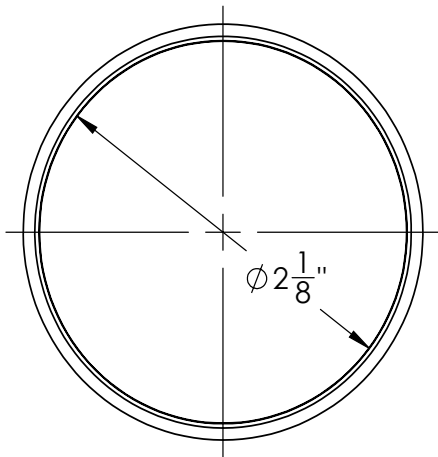
Fixed Length Series

- FXAS 65
- FXTIF 65/FXLTIF
- FXIG 65
- FXSG 65

FCB Double Waterproofing Models

- FCBAS 25
- FCBAS 65
- FCBTIF 65
- FCBIG 65
- FCBSG 65
- FCBST

TNAS-2 Threaded Outlet to be Bonded to Stainless Steel Channel using M1 ZSIKA Sealant



Infinity Drain
145 Dixon Avenue
Amityville, NY 11701
Phone: 516.767.6786
Fax: 516.740.3066
www.infinitydrain.com



NOTE: Installer must verify all rough-in dimensions prior to installation and consult local and national codes. Conformity and compliance to local and national codes are the responsibility of the installer.