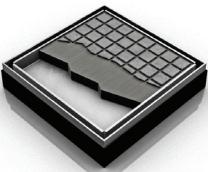

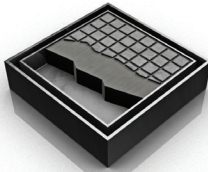
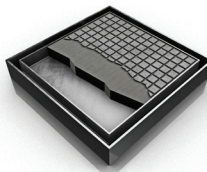
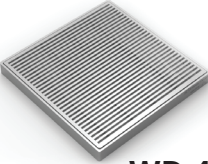

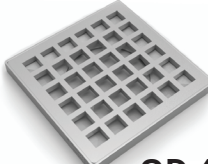
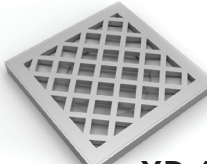
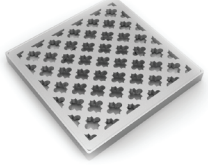
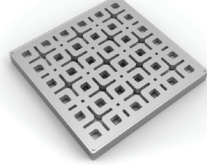
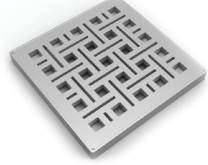
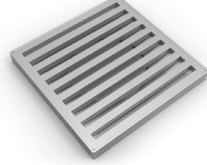
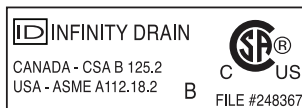


<p>LTD 5</p>  <p>LT5-2 LTD5-2</p>	<p>RTD 15</p>  <p>RTD 15-2 RTD 15-3</p>	<p>TD 15</p>  <p>TD 15-2 TD 15-3</p>	<p>TD 20</p>  <p>TD 20-2 TD 20-3</p>
<p>Wedge Wire</p>  <p>WD 4 WD 5</p>	<p>LW 5</p>  <p>L5-2 LW5-2</p>	<p>Squares</p>  <p>QD 4 QD 5</p>	<p>Criss-Cross</p>  <p>XD 4 XD 5</p>
<p>Moor</p>  <p>MD 4 MD 5</p>	<p>Link</p>  <p>KD 4 KD 5</p>	<p>Weave</p>  <p>VD 4 VD 5</p>	<p>Lines</p>  <p>ND 4 ND 5</p>

The Center Drain Series are intended for use with the following waterproofing methods:

- Hot Mop ◦ Copper Pan ◦ CPE Rubber Liner (Chloraloy®) ◦ PVC Liner ◦ Lead Pan ◦ Fiberglass

Made in the U.S.A.



Infinity Drain • 145 Dixon Avenue, Amityville, New York 11701
Phone 516.767.6786 • Fax 516.740.3066 • www.InfinityDrain.com

Dimension are subject to Manufacturers tolerance and change without notice. We can assume no responsibility for use of superseded or void data.

Las dimensiones están sujetos a la tolerancia del fabricante y cambio sin previo aviso. No podemos asumir ninguna responsabilidad por el uso de datos a sustituir los nulos.

Series Components:

LTD 5 Series	
LT5-2 SS	5" x 5" Strainer Only with Satin Stainless Finish
LT5-2 PS	5" x 5" Strainer Only with Polished Stainless Finish
CDI 22	Clamp Down Drain Cast Iron
CDA 22	Clamp Down Drain ABS
CDP 22	Clamp Down Drain PVC

TD 15 Series	
T15 A SS	5" x 5" Strainer Only - Satin Stainless Finish
T15 A PS	5" x 5" Strainer Only - Polished Stainless Finish
CDI 42	4" Throat x 2" Outlet Clamp Down Drain Cast Iron
CDI 43	4" Throat x 3" Outlet Clamp Down Drain Cast Iron
CDA 42	4" Throat x 2" Outlet Clamp Down Drain ABS
CDA 43	4" Throat x 3" Outlet Clamp Down Drain ABS
CDP 42	4" Throat x 2" Outlet Clamp Down Drain PVC
CDP 43	4" Throat x 3" Outlet Clamp Down Drain PVC
TKEY	Lift Out Key
HS 4	4" Hair Strainer Stainless Steel Throat

Optional Components: (Not Included)	
UCP 2	Universal 2" Clamping Plate
UCP 4	Universal 4" Clamping Plate
ERB	Eccentric Reducing Bushing 4"x2"

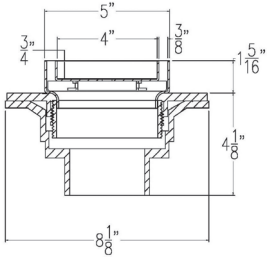
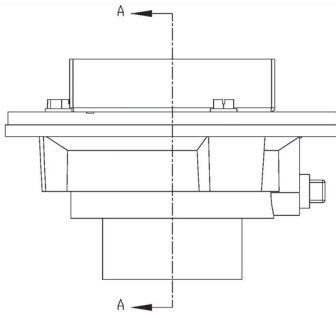
RTD 15 Series	
RT 15A	5" Round Tile Drain Strainer
CDI 42	4" Throat x 2" Outlet Clamp Down Drain Cast Iron
CDI 43	4" Throat x 3" Outlet Clamp Down Drain Cast Iron
CDA 42	4" Throat x 2" Outlet Clamp Down Drain ABS
CDA 43	4" Throat x 3" Outlet Clamp Down Drain ABS
CDP 42	4" Throat x 2" Outlet Clamp Down Drain PVC
CDP 43	4" Throat x 3" Outlet Clamp Down Drain PVC

TD 20 Series	
T20 A SS	8" x 8" Strainer Only - Satin Stainless Finish
T20 A PS	8" x 8" Strainer Only - Polished Stainless Finish
CDI 42	4" Throat x 2" Outlet Clamp Down Drain Cast Iron
CDI 43	4" Throat x 3" Outlet Clamp Down Drain Cast Iron
CDA 42	4" Throat x 2" Outlet Clamp Down Drain ABS
CDA 43	4" Throat x 3" Outlet Clamp Down Drain ABS
CDP 42	4" Throat x 2" Outlet Clamp Down Drain PVC
CDP 43	4" Throat x 3" Outlet Clamp Down Drain PVC
TKEY	Lift Out Key
HS 4	4" Hair Strainer

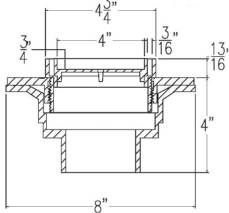
LW 5 Series	
L5-2 SS	5" x 5" Strainer Only - Satin Stainless Finish
L5-2 PS	5" x 5" Strainer Only - Polished Stainless Finish
L5-2 ORB	5" x 5" Strainer Only - Lifetime Oil Rubbed Bronze Finish
CDI 22	Clamp Down Drain Cast Iron
CDA 22	Clamp Down Drain ABS
CDP 22	Clamp Down Drain PVC

Note: Installer must verify all rough-in dimensions prior to installation and consult local and national codes. Conformity and compliance to local and national codes are the responsibility of the installer.

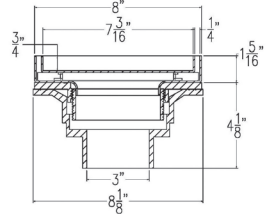
Tenga en cuenta: Instalador debe comprobar todas las dimensiones en las partes previa a la instalación y consultar localmente y nacionalmente los códigos. La conformidad y el cumplimiento de códigos local y nacional es responsabilidad del instalador.



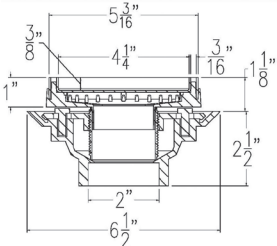
**Section A-A
TD 15**



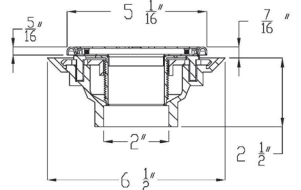
**Section A-A
RTD 15**



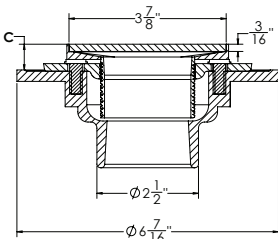
**Section A-A
TD 20**



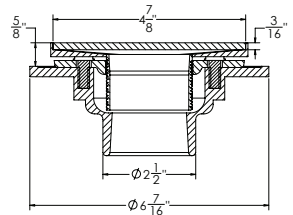
**Section A-A
LTD 5**



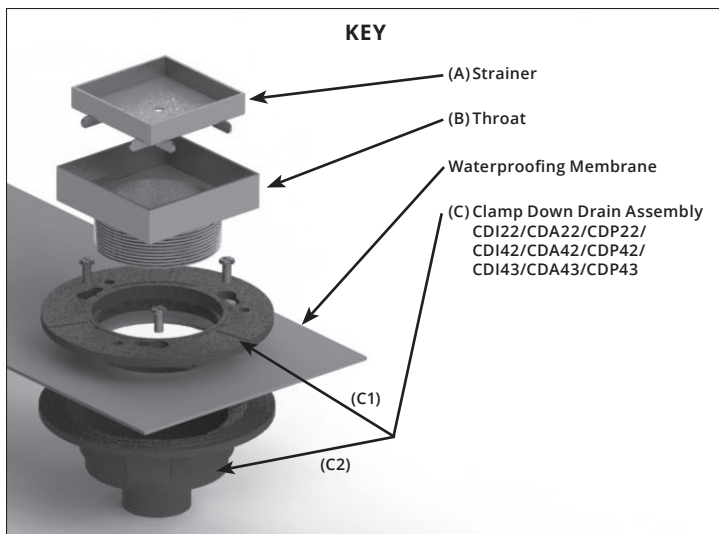
**Section A-A
LW 5**



**Section A-A
4" x 4" Center Drain**

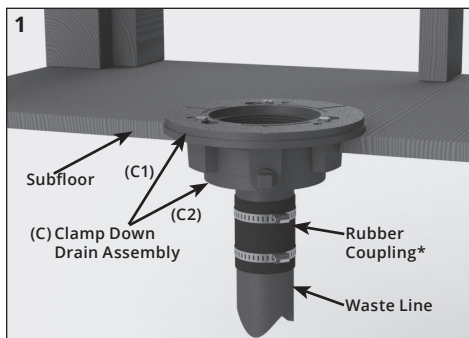


**Section A-A
5" x 5" Center Drain**



Installation

1. Connect the clamp down drain assembly (C) to existing waste line via no-hub rubber coupling, PVC cement, or ABS pipe cement and allow drain body (C2) to recess into subfloor. Ensure that drain assembly (C) is **level**. Unscrew and remove top clamp down plate (C1) from drain body (C2).

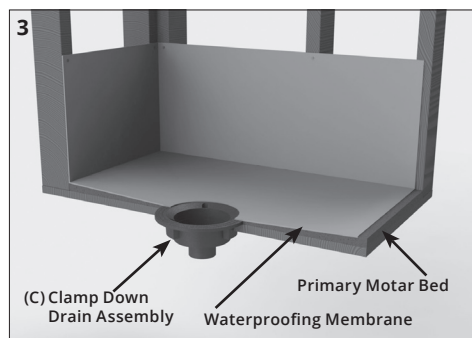


2. Spread a primary mortar bed across the intended shower area. Pitch this bed in four directions towards the drain body (C2).

3. When mortar layer is dry, perform necessary waterproofing (PVC Liner, Rubber Liner, Lead Pan, Copper Pan, Hot Mop, Fiberglass) as per local code. Ensure waterproofing layer reaches the edge of the hole in the drain body (C2).

Instalación

1. Conecte la sujeción del drenaje (C) a la existente línea de desecho a través del acoplamiento de goma no-hub, cemento de PVC, o tubo de ABS de cemento y permita que la sujeción (C2) a que rebaje en el piso. Asegure que la asamblea (C) este **anivelado**. Destornillar y remueva la placa (C1) de la sujeción (C2).



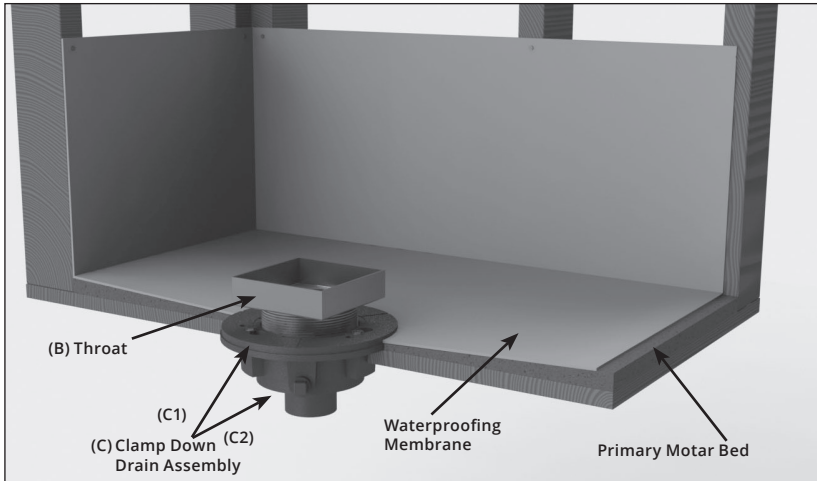
*Not provided by Infinity Drain kits

2. Propagar una capa de mortero a través de la zona de ducha prevista. Bree este mortero en cuatro direcciones hacia el drenaje (C2).

3. Cuando el mortero este seco, realice la impermeabilización necesaria (PVC Liner, Rubber Liner, Lead Pan, Cooper Pan, Hot Mop, Fiberglass) según el código. Asegure que la capa de impermeabilización alcance el borde del agujero en el drenaje (C2).

4. Reattach the top clamp down plate (C1) to the clamp down drain body (C2) over the waterproofing layer using bolts. Thread the throat (B) of the drain into top clamp down plate (C1). Adjust to the desired height. Turn clockwise to lower, counter-clockwise to raise. When determining desired height, include thickness of mortar, thinset and finishing material.

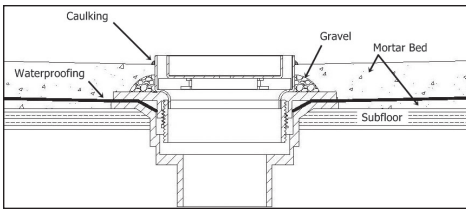
4. Vuelva a colocar la parte superior de la placa (C1) al drenaje (C2) sobre la capa de impermeabilización usando tornillos. Rosca el cuello (B) del drenaje en la placa del drenaje (C1). Ajústelo a la longitud deseada. Gire hacia la derecha para bajar, hacia la izquierda para aumentar. Al determinar la altura deseada, incluya el espesor del mortero, thinset y el material terminado.



Model	Overall Minimum Height	Overall Maximum Height*
LTD 5	1 1/8"	2 1/4"
RTD 15	13/16"	1 7/16"
TD 15	1 5/16"	2 1/16"
TD 20	1 5/16"	2 1/16"
WW 5	3/4"	1 3/4"
LW 5	7/16"	1 7/16"
Center Drain	5/8"	1 5/8"
Center Drain - High Flow	5/8"	1 5/8"

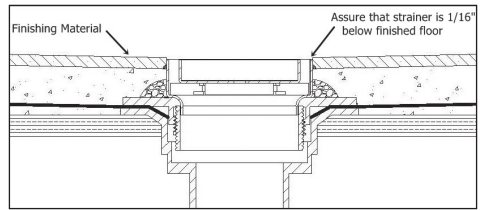
5. Using desired floor material, mark the thickness of the material along the outside of the throat (B), so that it will finish 1/16" above the channel. Lay gravel or other porous substrate over weep holes of the top clamp down plate (C1). Spread a final mortar bed up to the marked thickness, less the thickness of thinset. Pitch this bed in all directions toward the center drain. Once dry, apply a bead of silicone caulk around the throat (B). Lay thinset and finishing material. Have material finish to the edge of the throat (B). **DO NOT** allow finishing material to finish on top of the stainless steel channel edge.

5. Usando el material deseado, marque el espesor del material a lo largo de la parte afuera del cuello (B), para que termine 1/16" arriba del canal. Coloque grava u otro sustrato poroso sobre los orificios de drenaje (C1). Propague un mortero hasta el espesor marcado, menos del espesor del thinset. Bree esto en cuatro direcciones hacia el centro drenaje. Una vez que este seco, aplique un cordón de silicona alrededor de cuello (B). Coloque thinset y material terminado al borde superior del cuello (B). **NO PERMITA** que el material terminado termine encima del canal de acero inoxidable.



Before finishing material

Antes que el material esté terminado



After finishing material

Después que el material esté terminado

6. LTD 5/RTD 15/TD15/TD20 SERIES ONLY: Spread a layer of mortar into the strainer (A), allowing for thinset and finishing material to finish 1/16" above the metal frame. Allow to dry, spread thinset and lay material. Place top strainer (A) into the throat (B) of the drain.

6. LTD 5/RTD 15/TD15/TD20 SOLAMENTE: Propagar una capa de mortero en el strainer (A), permitiendo el thinset y material terminado que termine 1/16" por encima de la estructura de metal. Permita que se seque, propagar thinset y tender el material. Coloque la parte superior (A) en el cuello (B) del drenaje.

LW 5 SERIES: Place the strainer (A) into the throat (B) and fasten using screws at each corner.

LW 5 SERIE: Coloque el strainer(A) en el cuello (B) y sujetar con tornillos en cada esquina.

MUD GUARD: Drill a 1" hole in the marked location of the factory installed mudguard. Place your finger into the hole and pull out. Place the magnetic G-Series strainer (A) into the throat (B) (Each sold separately)

MUD GUARD: Perfore 1" agujero en la locación marcada del guardabarros que está instalado. Coloque su dedo en el agujero y retírelo. Coloque el magnético G-serie (A) en el cuello (B) (Cada uno se vende separado)

